



GMT MONTHLY MEMBERSHIP PROGRESS REPORT

Results as of: 8/31/2017

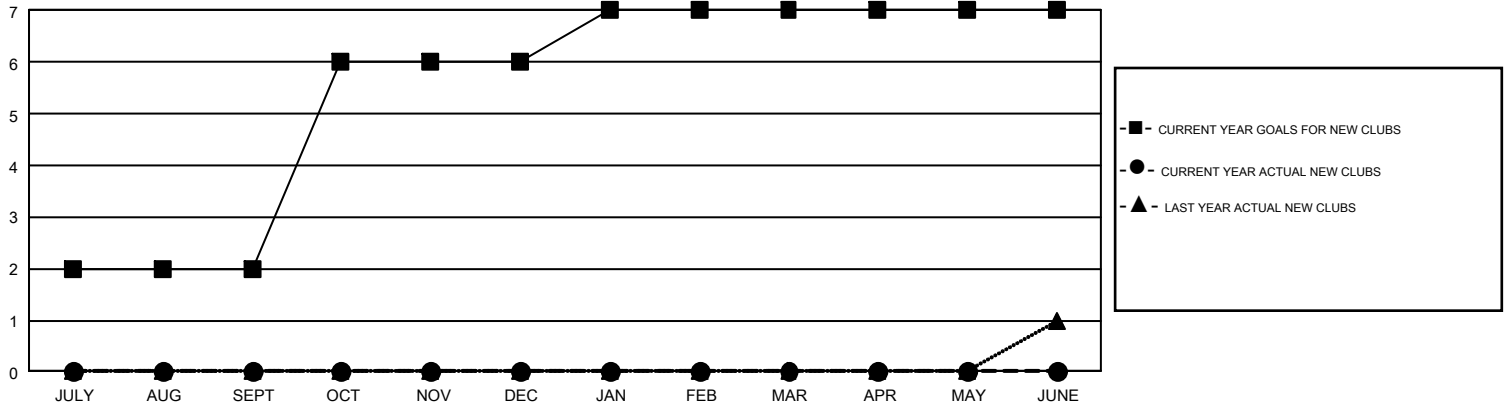
GMT Constitutional Area 7, Group B

GMT: CLIFFORD HEYWOOD

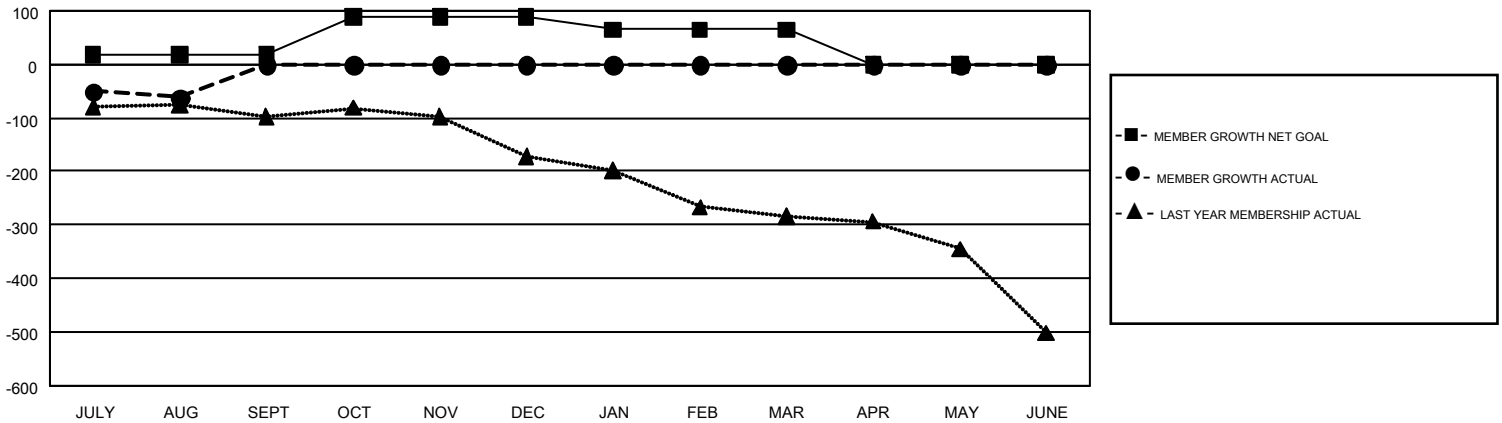
REPORT DOES NOT INCLUDE CLUBS IN UNDISTRICTED AREAS.

Clubs				Members			
RESULTS FOR 2017-2018				RESULTS FOR 2017-2018			
QUARTER	NEW CLUB GOAL	NEW CLUBS	DROPPED CLUBS	QUARTER	MEMBER GROWTH NET GOAL	MEMBER GROWTH ACTUAL	DROPPED MEMBERS ACTUAL (including transfers)
JULY/AUG/SEPT	2	0	4	JULY/AUG/SEPT	18	113	175
OCT/NOV/DEC	4	0	0	OCT/NOV/DEC	71	0	0
JAN/FEB/MAR	1	0	0	JAN/FEB/MAR	-24	0	0
APR/MAY/JUNE	0	0	0	APR/MAY/JUNE	-65	0	0

GOALS AND ACTUAL NEW CLUBS CUMULATIVE



GOALS AND ACTUAL MEMBERS CUMULATIVE



DROPPED CLUBS: 4	77 CLUBS OF 361 ADDED 1 OR MORE NEW MEMBERS	<u>GENDER DISTRIBUTION</u>	
<u>DROPPED MEMBERS</u>		MALE	6,771 (69.85%)
DECEASED	24	FEMALE	2,922 (30.15%)
CLUB CANCELLED	0	TOTAL FAMILY UNIT MEMBERS 832	
OTHER	151	FAMILY MEMBERS PAYING HALF DUES 421	
TOTAL	175		

[CLICK HERE FOR CUMULATIVE MEMBERSHIP DATA](#)